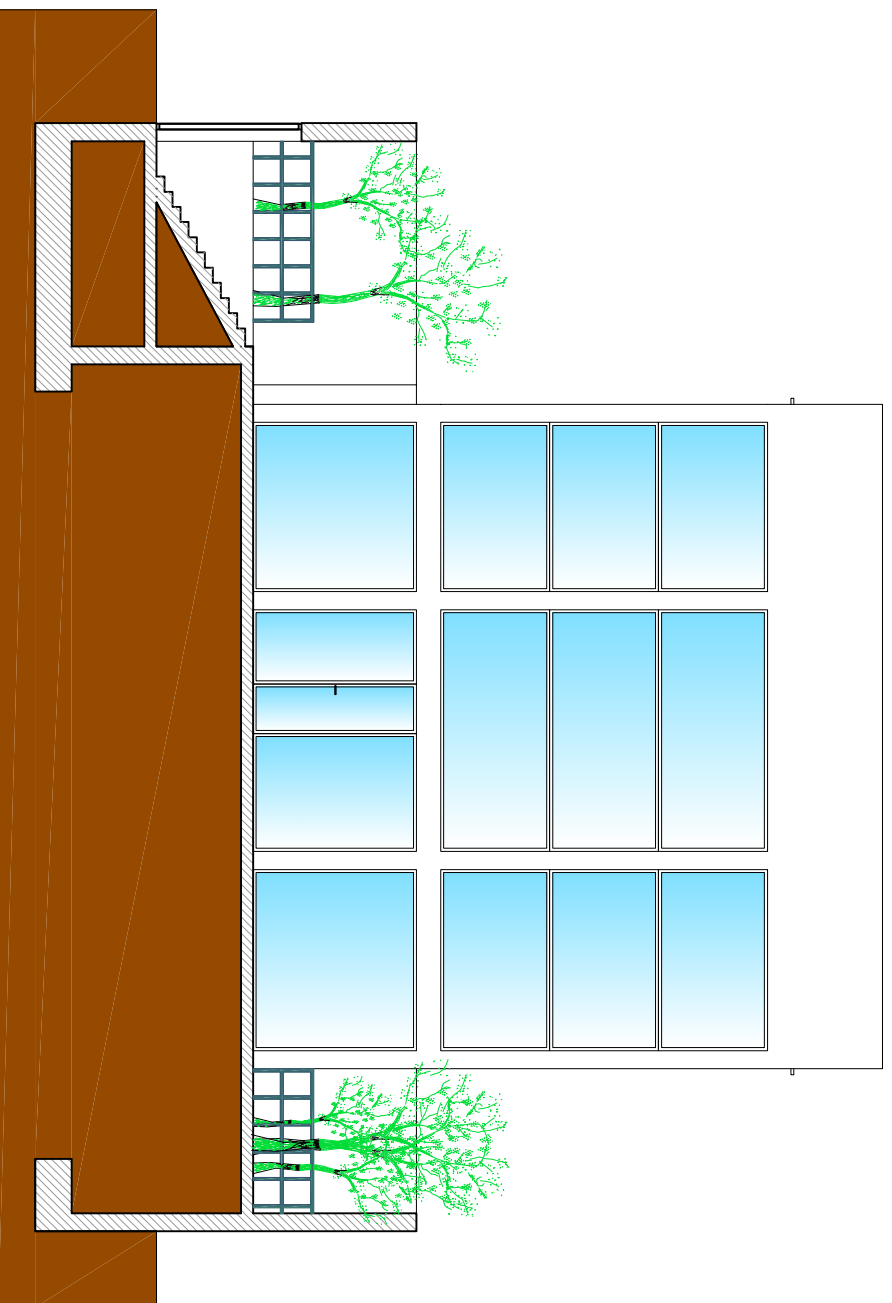


ALZADO INTERIOR
NORTE (AIN)



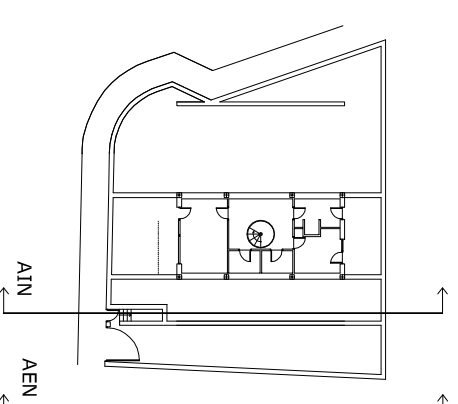
+12.00

+4.30

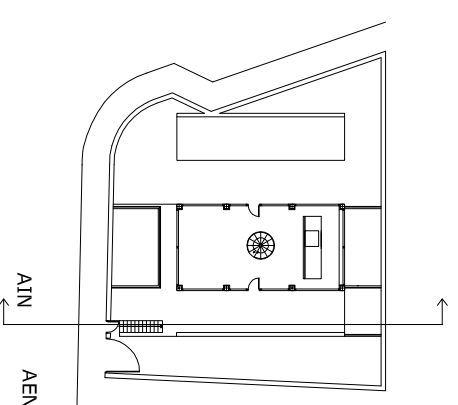
+1.60
+1.40

± 0.0 - 0.20

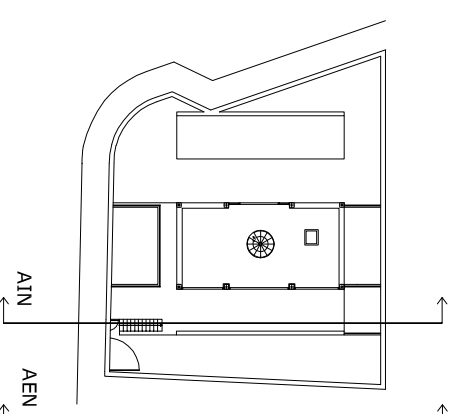
PLANTA SEMISÓTANO



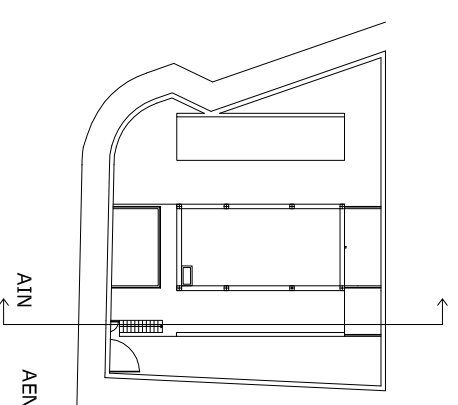
PLANTA BAJA



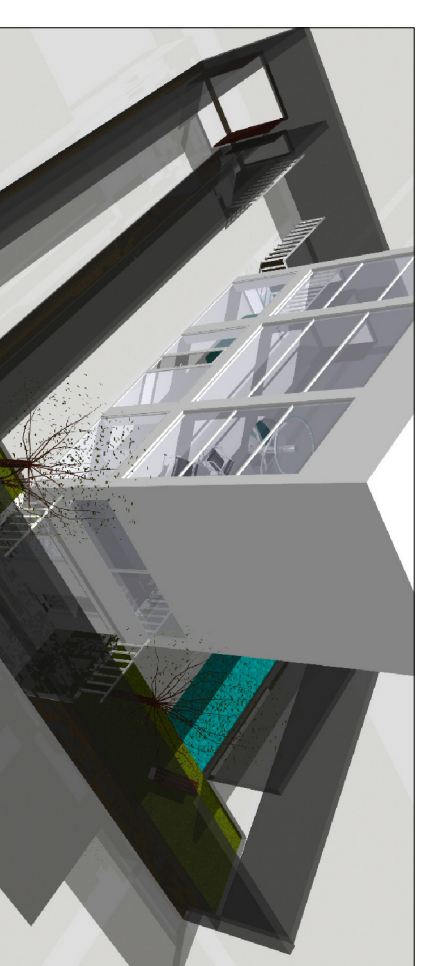
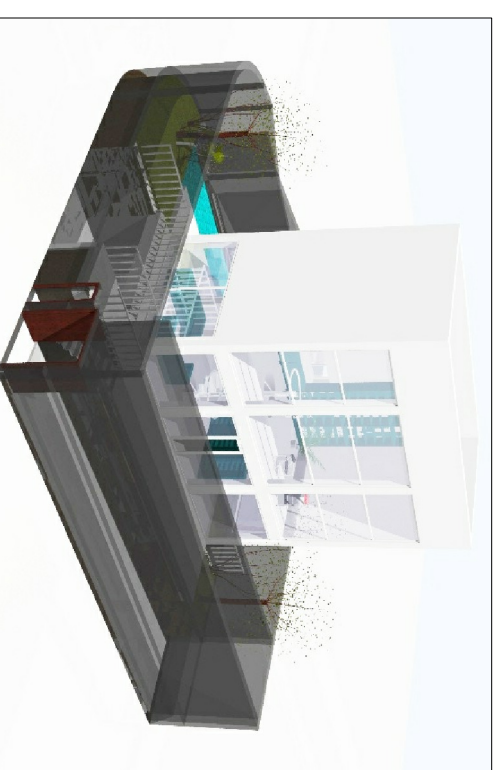
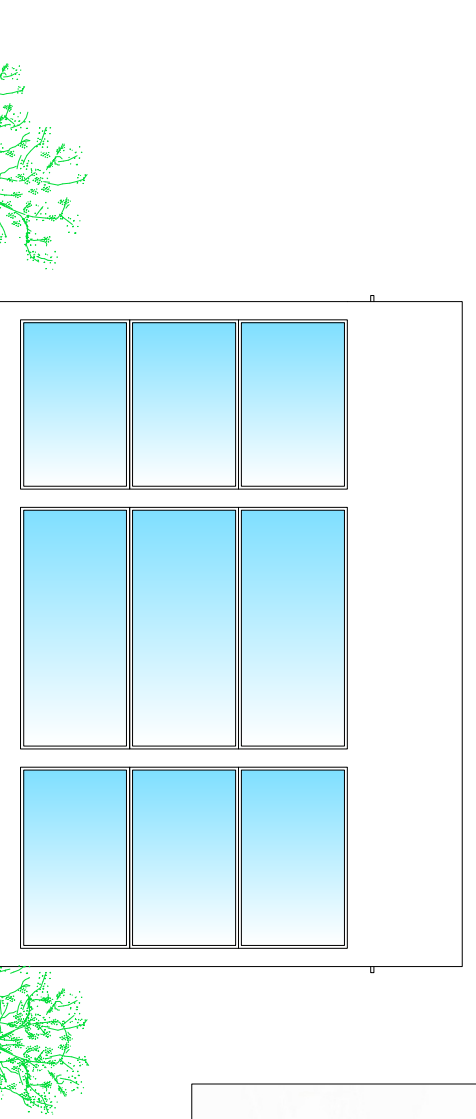
PLANTA PRIMERA



PLANTA CUBIERTA

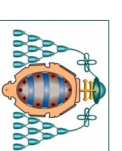


ALZADO EXTERIOR
NORTE (AEN)



ESTUDIO DE SEGURIDAD Y SALUD "CASA MOLINER"

PROYECTO FIN
DE MÁSTER



FACULTAD DE ECONOMÍA
Y EMPRESA
UNIVERSIDAD DE OVIEDO

Tutor: PEDRO RIESGO FERNÁNDEZ

Alumno: ANGELES MARTÍNEZ HUERGA

Situación: AV. DE LA ILUSTRACIÓN, Nº 40
- URBANIZACIÓN MONTECANAL - ZARAGOZA



Plano de:

ALZADO NORTE

Nº de plano:

04

Firma:

Angela

FEBRERO 2013

Escala:

1/125