

**HALLAZGO DE UN REPTIL CARBONIFERO EN
LANGREO.-**

(atlas)



Lamina V.

1



2



3



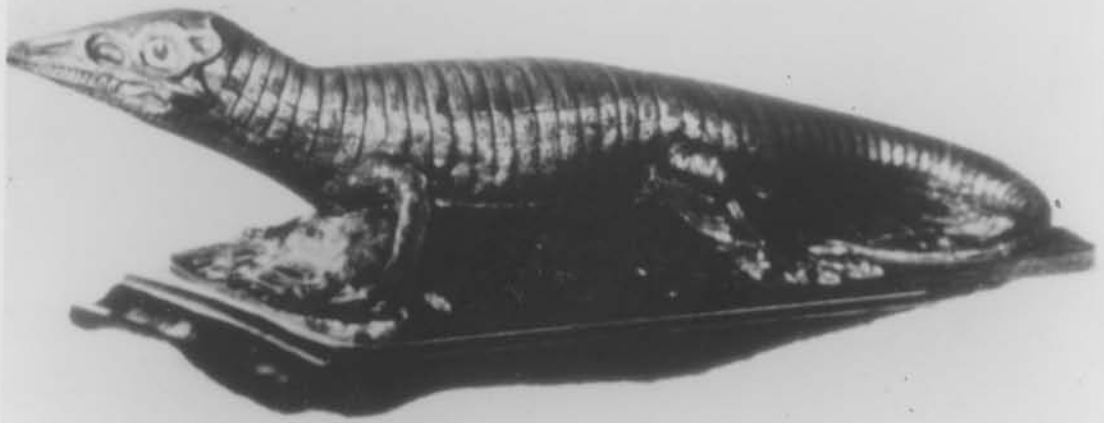
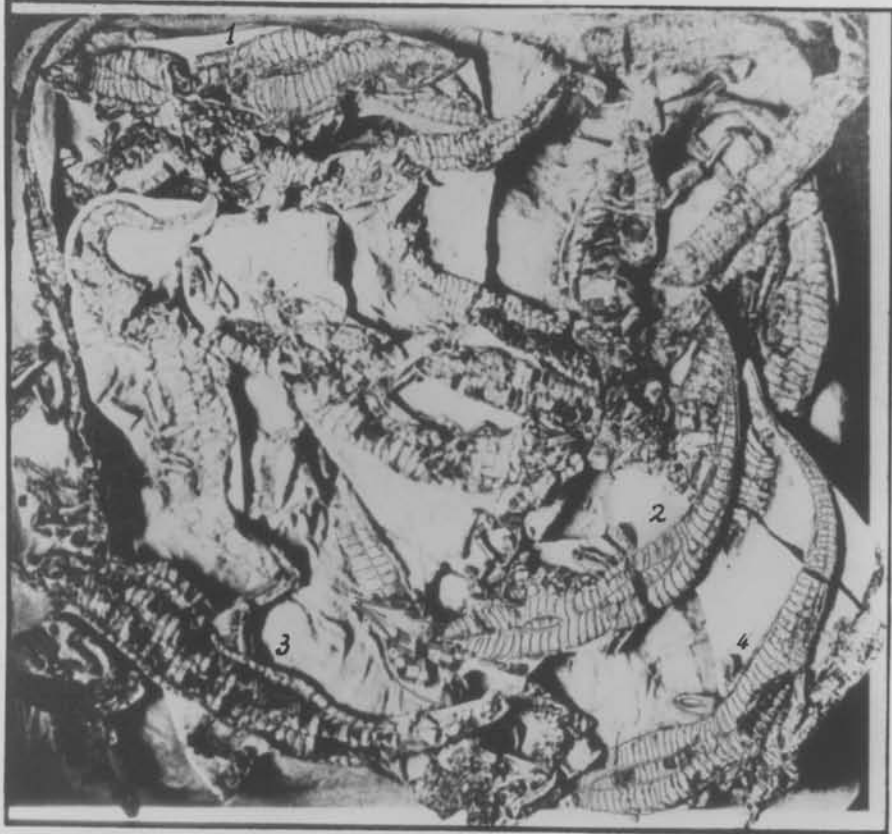
7

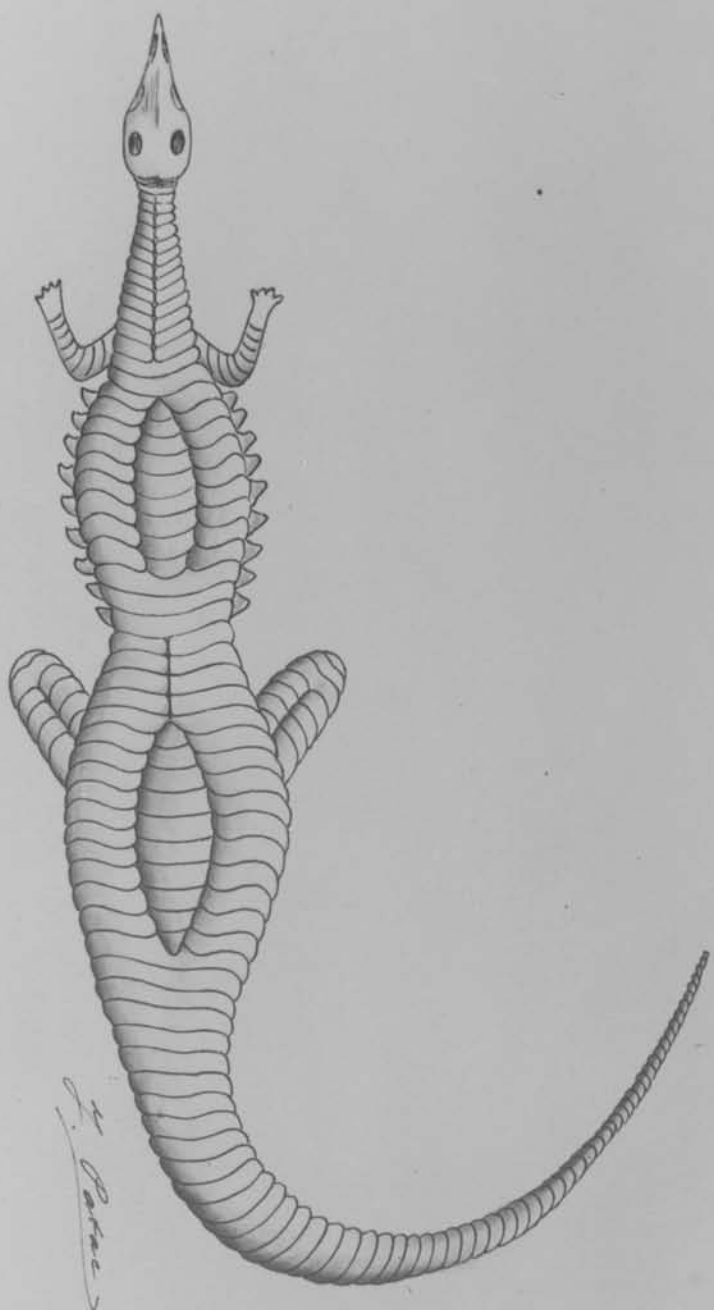


Lámina VII.



Capa de arenisca (A) al techo del yacimiento, con Ripplemarks.





Mina del Fondon (Sama de Langreo). Aëtosaurus giganteus. nov. sp. Reconstrucción hipotética

Escala 1/35

