

RESEARCH ARTICLE

Mortality risk in adults according to categories of impaired glucose metabolism after 18 years of follow-up in the North of Spain: The Asturias Study

Jessica Ares^{1☉‡*}, Sergio Valdés^{2☉‡}, Patricia Botas^{3☉‡‡}, Cecilia Sánchez-Ragnarsson^{1‡‡}, Sandra Rodríguez-Rodero^{1‡‡‡b}, Paula Morales-Sánchez^{1‡‡‡b}, Edelmiro Menéndez-Torre^{1‡‡‡‡‡}, Elías Delgado^{1‡‡‡‡‡}

1 Asturias Central University Hospital, Endocrinology and Nutrition Department, Oviedo, Asturias, Spain, 2 Málaga Regional University Hospital, Endocrinology and Nutrition Department, Málaga, Andalucía, Spain, 3 San Agustín University Hospital, Endocrinology Department, Avilés, Asturias, Spain

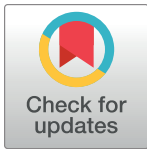
☉ These authors contributed equally to this work.

‡‡ Current address: ISPA, Principality of Asturias Health Research Institute, Oviedo, Asturias, Spain

‡‡‡ Current address: University of Oviedo, Asturias, Spain.

‡ JA, SV and PB are first authors. EM and ED contributed equally as senior authors.

* jessiaresb@gmail.com



OPEN ACCESS

Citation: Ares J, Valdés S, Botas P, Sánchez-Ragnarsson C, Rodríguez-Rodero S, Morales-Sánchez P, et al. (2019) Mortality risk in adults according to categories of impaired glucose metabolism after 18 years of follow-up in the North of Spain: The Asturias Study. PLoS ONE 14(1): e0211070. <https://doi.org/10.1371/journal.pone.0211070>

Editor: Venkata Naga Srikanth Garikipati, Temple University, Lewis Katz School of Medicine, UNITED STATES

Received: September 26, 2018

Accepted: January 7, 2019

Published: January 31, 2019

Copyright: © 2019 Ares et al. This is an open access article distributed under the terms of the [Creative Commons Attribution License](https://creativecommons.org/licenses/by/4.0/), which permits unrestricted use, distribution, and reproduction in any medium, provided the original author and source are credited.

Data Availability Statement: All relevant data are located in the following repository: <https://figshare.com/s/89150653bc548e0a1283>.

Funding: This work was supported by a grant from the Fondo de Investigación Sanitaria (98/0462) and a grants from the Consejería de Salud del Principado de Asturias and Pfizer Laboratories. Recently, Sanofi Laboratories supported follow-up

Abstract

People who develop type 2 diabetes (T2D) are known to have a higher mortality risk. We estimated all-cause, cardiovascular, and cancer mortality-risks in our patient cohort according to categories of impaired glucose metabolism. This 18-year retrospective analysis included a region-wide, representative sample of a population aged 30–75 years. Age- and sex-stratified hazard ratios (HRs) were calculated for 48 participants with diagnosed T2D, 83 with undiagnosed T2D (HbA1c $\geq 6.5\%$, fasting glycemia ≥ 126 mg/dL, or glycemia after 75 g glucose load ≥ 200 mg/dL); 296 with prediabetes (HbA1c 5.7%–6.4%, fasting glycemia 100–125 mg/dL, or glycemia after 75 g glucose load 140–199 mg/dL), and 607 with normoglycemia. Over 18,612 person-years, 32 individuals with undiagnosed T2D, 30 with diagnosed T2D, 62 with prediabetes, and 80 with normoglycemia died. Total sample crude mortality rate (MR) was 10.96 deaths per 1,000 person-years of follow-up. MR of the diagnosed T2D group was more than 3-times higher and that of newly diagnosed T2D was 2-times higher (34.72 and 21.42, respectively) than total sample MR. Adjusted HR for all-cause mortality was 2.02 (95% confidence interval 1.29–3.16) and 1.57 (95% CI 1.00–2.28) in the diagnosed T2D group and the newly diagnosed T2D group, respectively. Adjusted HR for cardiovascular mortality in the T2D group was 2.79 (95% CI 1.35–5.75); this risk was greatly increased in women with T2D: 6.72 (95% CI 2.50–18.07). In Asturias, age- and sex-standardized all-cause mortality is more than 2-times higher for adults with T2D than for adults without T2D. The HR for cardiovascular mortality is considerably higher in T2D women than in normoglycemic women.

and fieldwork (done by Alicia Cobo, C.S. and J. A.) in 2010 and 2016 by grants. The funders had no role in study design, data collection and analysis, decision to publish, or preparation of the manuscript.

Competing interests: The authors have a competing interest to declare: Sanofi and Pfizer helped us with grants to support field work. This does not alter our adherence to PLOS ONE policies on sharing data and materials.

Abbreviations: T2D, Type 2 diabetes; HR, Hazard ratio; MR, Mortality Rate; HbA1c, Glycohemoglobin; BMI, Body mass index; BP, Blood pressure; OGTT, Oral glucose tolerance test; HDL, High-density cholesterol; LDL, Low-density cholesterol; HPLC, High power liquid chromatography; ADA, American Association of Diabetes; IGT, Impaired glucose tolerance; IFG, Impaired fasting glucose; NGT, Normal glucose tolerance; BF, Body fat; RR, Relative risk.

Introduction

Worldwide mortality caused by diabetes reached four million in 2017 [1]. About half of diabetes-related mortality (48%) occurs in people younger than 60 years. Although a decrease in mortality caused by diabetes has been observed in Europe and North America [2], diabetes continues to reduce life expectancy by 6–8 years in people diagnosed at the age of 50 years. The majority (>50%) of diabetes-caused mortality is from cardiovascular diseases.

The association between diabetes and premature death has been confirmed by a review of 97 prospective trials with 820,900 people [3]. As a high percentage of type 2 diabetes (T2D) has not been diagnosed, the mortality risk in this population has not been sufficiently investigated. The DECODE study (13 European cohorts) defined the proportion of unknown diabetes to be between 39% and 70%, depending on sex and age [4]. According to the latest International Diabetes Federation Diabetes Atlas [1], it has been estimated that, globally, as many as 212.4 million people or half (50.0%) of all people aged 20–79 years with T2D are unaware of their disease.

T2D increases both cardiovascular and all-cause mortality [5]. Both appear to have a directly proportional relationship with glycemia [6]. Despite this, there is no homogeneity in different studies regarding the magnitude of the potential risks.

Materials and methods

The Asturias study

The Asturias Study is a population-based prospective cohort study of T2D and cardiovascular risk factors whose framework is the population of Asturias (a region in the north of Spain). The first phase was conducted in 1998–1999, with the aim to determine the prevalence of T2D (both diagnosed and undiagnosed) in the Asturias population. Asturias is home to approximately 1 million people, mostly white. More than half of the population lives in urban areas. A two-stage, probability cluster sampling procedure was applied. First, we selected 15 of 75 Asturias districts for analysis. Second, we selected age- and sex-stratified random samples of adults aged 30–75 years from each district [7]. Participants were randomly selected from the general population.

The resulting sample included 1,875 people; 87 were excluded due to pre-specified criteria (e.g., type 1 diabetes mellitus, pregnancy, severe disease, hospitalization, and treatment with hyperglycemic drugs) and 162 were excluded due to lack of contact data. Our final sample included 1,626 people but only 1,034 (63.6% response rate) participated.

Healthcare Principality of Asturias Ethics Committee approved the study, and all participants gave written informed consent. A health survey was conducted within the sample to collect relevant information, including demographic data, smoking habits, physical activity, socioeconomic status, and family history of T2D. Cardiovascular risk factors were assessed using standardized methods based on World Health Organization (WHO) recommendations [8]. Height and weight were measured with the participant wearing light clothing and without shoes, and body mass index (BMI) was calculated (weight in kilograms divided by the square of the height in meters). Blood pressure (BP) was measured using a digital sphygmomanometer (OMROM MX3, OMROM Healthcare, Tokyo, Japan) with the person seated and at rest. The mean of two BP measurements, taken 1–2 min apart, was used for this analysis.

Measurements

As we used data collected in 1998, the methodology is similar to that described by Valdés et al. in 2009 [9]. Oral glucose tolerance tests (OGTTs) were performed in all individuals without

previously known T2D. Fifteen minutes after each blood extraction, the blood was centrifuged *in situ* using a portable centrifuge. The samples were transported daily in a portable refrigerator (4–6°C) for processing at the Clinical Biochemistry laboratory of the Hospital Universitario Central de Asturias. Glucose levels were measured after fasting and after the OGTT (glucose-hexokinase enzyme method, Hitachi 747 analyzer, Roche Diagnostics, Mannheim, Germany). Measurements were also made of concentrations of total cholesterol, high-density lipoprotein cholesterol, triglycerides (colorimetric enzyme method, Hitachi 747 analyzer, Roche Diagnostics, Mannheim, Germany), low-density lipoprotein cholesterol (LDL-C) (Friedewald equation), and glycohemoglobin (HbA1c) (high-performance liquid chromatography, Jokoh HS-10 automated HbA1c analyzer, computer interface RS232). Initial Japanese HbA1c measurements were standardized to International Federation of Clinical Chemistry (IFCC) values (Japanese Society of Clinical Chemistry HbA1c = 0.927 (IFCC HbA1c) + 1.73).

Diagnosed diabetes was defined according to self-reported medical diagnosis or the use of antidiabetic drugs. We used ADA (American Association of Diabetes) 2018 criteria to define categories of glucose metabolism: newly diagnosed diabetes (≥ 126 mg/dL/ ≥ 7.0 mmol/L fasting, ≥ 200 mg/dL/ ≥ 11.1 mmol/L 2-h post-glucose load, or HbA1c $\geq 6.5\%$); impaired glucose tolerance (IGT) (2-h post-glucose load during 75-g OGTT 140 mg/dL [7.8 mmol/L] to 199 mg/dL [11.0 mmol/L]); impaired fasting glucose (IFG) (fasting plasma glucose 100 mg/dL [5.6 mmol/L] to 125 mg/dL [6.9 mmol/L]); and NGT. Prediabetes includes IFG and/or IGT and/or HbA1c 5.7%–6.4% (39–47 mmol/mol).

Previous reports about the Asturias Study [7,9,10] used WHO 1999 criteria to define categories of glucose metabolism; the difference from the criteria used in this study is that IFG is between 6.1 and 7.0 mmol/L, and HbA1c is not considered a diagnostic parameter. Body fat percentage (BF%) was calculated by applying the Clinica Universidad de Navarra—Body Adiposity Estimator (CUN-BAE) predictive equation (11)(11)(11)(11)(11)(11)[11]. Obesity was taken to be a BF% $\geq 25\%$ in men and $\geq 35\%$ in women.

Follow up and mortality

In December 2016, the vital status of the initial cohort (studied in 1998–1999) was updated. Deaths were recorded by healthcare card data of Principality of Asturias. Cause of death for the 18-year follow-up was ascertained by our register of mortality. All deaths were coded according to the International Classification of Diseases, 10th Revision (WHO) [12]. Codes I00–I99 (cardiovascular diseases) or R96 (sudden death, unknown cause) defined cardiovascular mortality because, generally, sudden death is due to cardiovascular disease [13]. Codes C00–D48 defined cancer death.

Statistical analysis

All calculations were performed with SPSS version 21.0 (SPSS Inc, 2013). The reported P-values were based on a two-tailed test with a limit of statistical significance set to $P < 0.05$. Evaluation of the risk of death in the different categories of dysglycemia was done by classifying the people included in the registry of deaths into four groups according to the results of the OGTT during the first study (ADA 2018 criteria). Comparisons between groups for quantitative variables were done with an analysis of variance. The person-years of follow-up were estimated for each group, as was the number of events (deaths), by calculating the mortality rates for every 1000 inhabitant-years (95% confidence interval [CI]).

Cox regression analysis was used to analyze the accumulated impact curves and the corresponding hazard ratios (HRs) of death, adjusted for age, sex, and multivariable (adjusted for age, sex, BMI, history of high BP, smoking habits, LDL-C, glomerular filtration rate, and the

prior presence of cardiovascular disease) in the different groups. Hazard ratios represent the ratio of death probabilities. For example, a hazard ratio of 2 for the diagnosed diabetes group means that this group has twice the risk of dying than the normoglycemia group.

Results

Baseline characteristics

The Asturias Study cohort included 1,034 individuals (58.7% with normoglycemia, 28.1% with prediabetes, 4.6% with known T2D, and 9.6% with newly diagnosed T2D). Individuals with previously known T2D were significantly older, less likely to smoke, had higher systolic BP, more previous history of cardiovascular disease, higher triglycerides, and lower glomerular filtration rate than individuals in the other groups. However, they had similar or even lower figures for total cholesterol and LDL-C than the general population without dysglycemia; these values were highest in the groups with prediabetes and undiagnosed DM. Likewise, there was a progressive increase in LDL-C across the groups of fasting hyperglycemia and HbA1c. Of note was the fact that the mean levels of HbA1c in the group with undiagnosed T2D were almost within the range of normality. Newly diagnosed T2D had the highest BF% (Table 1).

Mortality by glucose tolerance categories

Over the 18 years of follow-up, 204 (19.8%) deaths were recorded. Deaths were classified in three groups according to etiology: cardiovascular, 74 (36.3%); cancer, 72 (35.3%); and other causes, 58 (28.4%). The crude rate for all-cause mortality was 10.96% (95% CI 9.55–12.57) per 1,000 person-years. Crude mortality rates for people without carbohydrate metabolism disorders were the lowest compared to those of people with prediabetes, known T2D, and unknown T2D (Table 2 and Fig 1).

The age- and sex-adjusted mortality risks were almost equal in the NGT and prediabetes groups and higher in subjects with previously undiagnosed T2D; however, the risks were not as high as for known T2D at baseline (Table 2). After multivariable adjustment, people with known T2D had a mortality rate (MR) more than two-fold greater than people in the NGT group (2.02 [95% CI 1.29–3.16]); whereas, for people with undiagnosed T2D, the MR was 1.51-times higher (95% CI 1.00–2.28) (Fig 2).

The risk of death in those with T2D, both diagnosed and undiagnosed, versus those without dysglycemia was 1.71 (95% CI 1.25–2.34) in the multivariate model and 1.78 (95% CI 1.31–2.42) in the model adjusted for age and sex.

Cause of death, age, and sex differences

Individuals with T2D presented with higher risks of cardiovascular and cancer death in the 18-year follow-up. In adjusted models, cancer mortality was slightly increased in subjects with known and undiagnosed T2D, whereas cardiovascular mortality was highly increased in both groups (Table 3).

Individuals who died of cancer were younger than those who died from other causes. Previous cardiovascular disease, a higher level of HbA1c, and a history of hypertension predicted deaths from cardiovascular events. Furthermore, smoking was more common in people who died of cancer (Table 4).

Moreover, persons with a history of cardiovascular disease had a higher risk of all-cause (and especially cardiovascular) mortality, with statistical significance. HRs for persons with previously known T2D compared to those in the NGT group were higher in women than in

Table 1. Metabolic and cardiovascular risk parameters according to the different clinical categories of dysglycemia during the first phase of the study (1998–1999).

	Total population	Normoglycemia	Prediabetes	Unknown diabetes	Diagnosed diabetes	P-value
Patients (n)	1034	607	296	83	48	<0.001
Men (%)	473 (45.7)	238 (39.2)	160 (54.1)	47 (57.6)	28 (58.3)	<0.001
Age (years)	52.1±13.4	49.4±3	56.5±12	61.5±11.2	65.6±8.6	<0.001
Smokers (%)	293 (28.3)	177 (29.2)	65 (22)	19 (22.9)	10 (20.8)	<0.001
Previous CVD (%)	49 (4.7)	12 (2)	19 (6.4)	9 (10.8)	9 (18.8)	0.001
Estimated body fat (%)	34.6±8.1	33.6±7.7	35.6±8.4	37.7±7.7	36.0±9.7	<0.001
BMI (kg/m ²)	27.6±4.7	26.5±4.3	28.9±4.4	30.5±4.8	28.9±5.7	<0.001
SBP (mmHg)	134.2±22.1	127.4±19.4	139.9±21	151.6±21.1	155.3±22.8	<0.001
DBP (mmHg)	83.7±13.5	80.1±12.4	87.5±13.7	91±13.2	91.8±11.6	<0.001
Total cholesterol (mg/dL)	223.45.5	223.9±40.6	236.4±43.4	240.7±38.4	235.9±95.4	<0.001
HDL cholesterol (mg/dL)	56.3±14.2	58.3±14.7	54.2±12.6	51.8±14.2	51.7±12.9	<0.001
LDL cholesterol (mg/dL)	149.6±37.0	145.7±36.6	156.3±38.4	158.6±33.5	141.3±30.9	<0.001
TG (mg/dL)	125.0±61.3	102.8±66.1	130.5±65.7	154.3±78.3	152.5±77.8	<0.001
eGFR (ml/min)	78.6±19.3	83.1±18.9	73.6±18.1	71.5±17	65.6±19.1	<0.001
Fasting glucose (mg/dL)	100.2±23.5	89.6±6.2	104.6±9.0	123.4±23.3	168±56.2	<0.001
HbA1c (%)	5.3±0.8	5±0.4	5.3±0.4	6±1	7.5±1.7	<0.001

Abbreviations: CVD, cardiovascular disease; BMI, body mass index; SBP, systolic blood pressure; DBP, diastolic blood pressure; HDL, high-density lipoprotein; LDL, low-density lipoprotein; TG, triglycerides; eGFR, estimated glomerular filtration rate; HbA1c, glycohemoglobin.

<https://doi.org/10.1371/journal.pone.0211070.t001>

men (2.56 vs. 1.76). Furthermore, men with newly diagnosed T2D had a higher risk of cardiovascular death than men with previously diagnosed T2D.

The HR for cardiovascular mortality in women with known T2D was 6.72 (95% CI 2.50–18.07) vs. 1.66 (95% CI 0.46–5.95) in men with the same condition (Fig 3).

Cancer mortality was also increased in people with known T2D, especially in men; however, it was not statistically different (Fig 4).

People younger than 45 years with T2D (both diagnosed and unknown) had a strongly increased mortality risk compared to the NGT group of the same age. This risk decreased with increasing age (Table 5).

Table 2. Crude and standardized hazard ratios and rates for all-cause mortality.

	Normoglycemia	Prediabetes	T2D			Total
			Unknown T2D	Known T2D	Total T2D	
Patients (n)	607	296	83	48	131	1034
Deaths (n)	80	62	32	30	62	204
Deaths/1,000 person-years (95% CI)	7.32 (5.72–8.92)	11.64 (8.74–14.54)	21.42 (14.00–28.84)	34.72 (22.3–47.13)	27.12 (21.14–34.79)	10,96 (9.55–12.57)
HR (95% CI)	1	1.68 (1.20–2.33)	3.53 (2.34–5.32)	7 (4.60–10.67)	3.82 (2.83–5.15)	
Age- and sex-adjusted HR (95% CI) for all-cause mortality	1	1.05 (0.75–1.47)	1.57 (1.04–2.39)	2.20 (1.43–4.00)	1.78 (1.31–2.42)	
Multivariate for all-cause mortality	1	0.99 (0.71–1.39)	1.51 (1.00–2.28)	2.02 (1.29–3.16)	1.71 (1.25–2.34)	

*Previously adjusted by age, sex, previous cardiovascular disease, smoking habits, history of high blood pressure, low-density lipoprotein cholesterol, estimation of glomerular filtration rate and body mass index.

Abbreviations: T2D, type 2 diabetes; CI, confidence interval; HR, hazard ratio.

<https://doi.org/10.1371/journal.pone.0211070.t002>

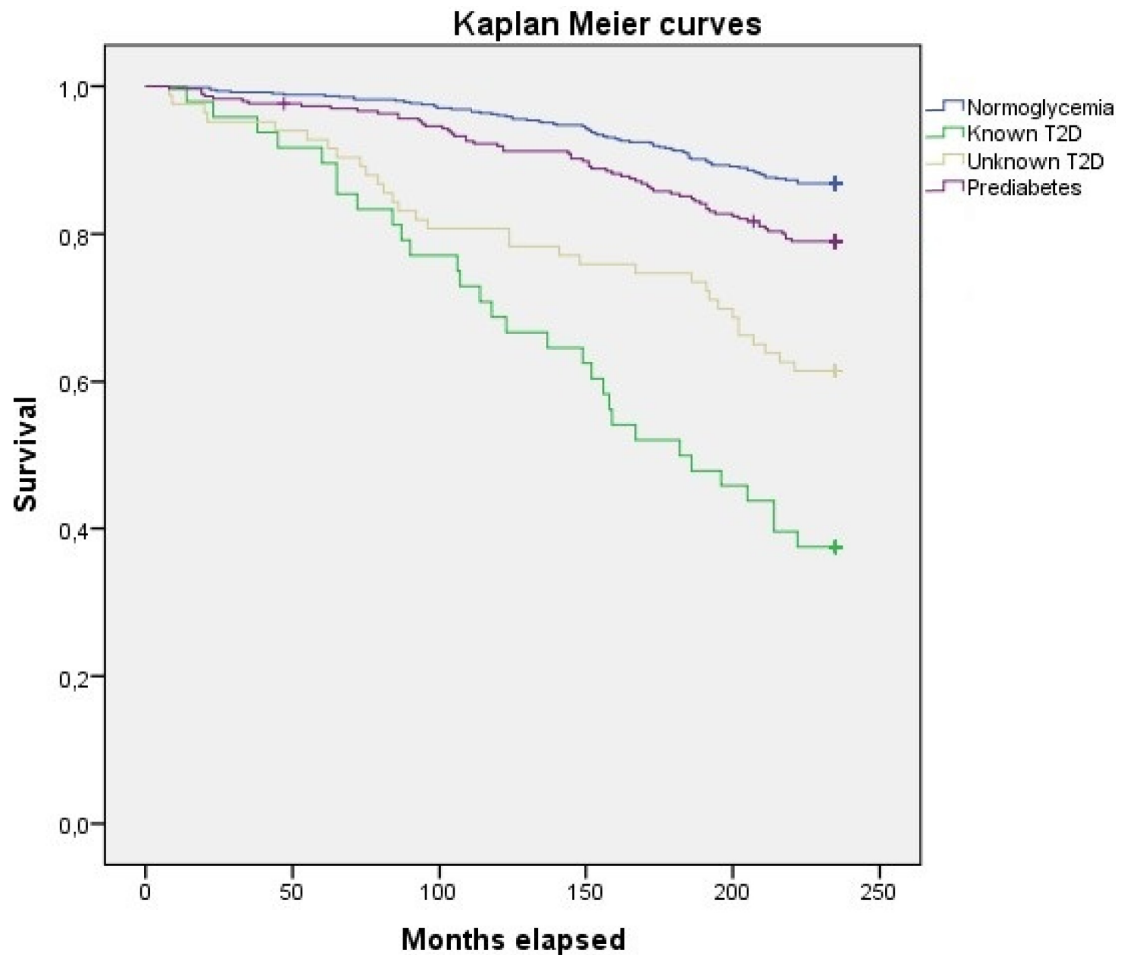


Fig 1. Accumulated all-cause mortality Kaplan-Meier curves for the groups with normoglycemia, prediabetes, unknown T2D and known T2D. Not adjusted model.

<https://doi.org/10.1371/journal.pone.0211070.g001>

Discussion

In this Spanish population-based sample, regionally representative with up to 18-year follow-up, mortality risk was more than two-times higher (2.02) among adults with known T2D than among adults in the NGT group. Risk of death associated with T2D was especially increased in younger age groups. Moreover, mortality risk was notably higher in women with T2D than in men (both with known and undiagnosed T2D) because of an increase in cardiovascular mortality.

Although previous studies reported different data, comparability is limited because of differences in numbers, age, and sex structures. In 2017, Röckl et al. [14] published a similar study with 6550 participants (575 with T2D) that showed that mortality was almost twice as high in the T2D group than in the NGT group; however, mortality tended to be higher in men than in women in the case of undiagnosed T2D. Tancredi et al. [15] followed 435,369 Swedish persons with T2D aged ≥ 18 years from 1998–2011 and compared their mortality to matched controls. The HR for mortality was 1.77 (95% CI 1.03–3.04) in the T2D group. The KORA S4 study compared a population of 1466 German adults aged 55–74 years and reported higher mortality rates in people with known T2D than for those in the NGT group: 2.6 (95% CI 1.7–3.8) [16]. The ERFORT study (1125 German men aged 40–59 years) compared men with known T2D

Total mortality

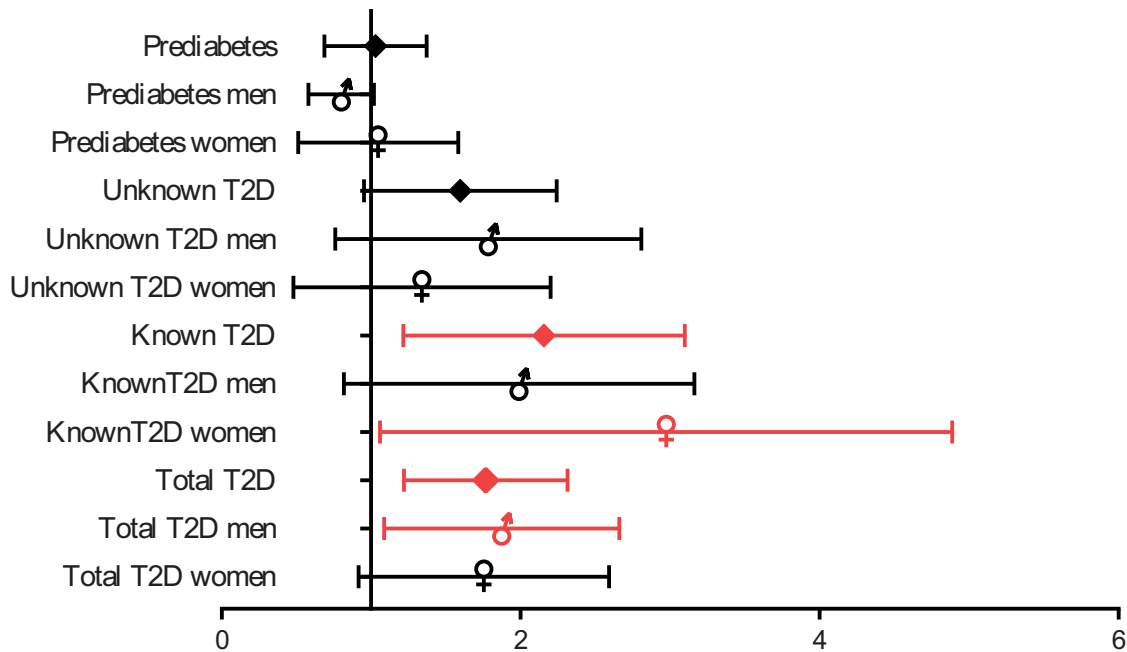


Fig 2. HR (95% CI) for all-cause mortality depending on gender and presence of known or undiagnosed T2D. Model adjusted for gender, age, body mass index, history of previous cardiovascular disease, history of high blood pressure, smoking, low density lipoprotein cholesterol and estimated glomerular filtration rate.

<https://doi.org/10.1371/journal.pone.0211070.g002>

and normoglycemia. Mortality risks ranged from 1.86 (95% CI 1.22–2.84) to 2.22 (95% CI 1.36–3.63) depending on the duration of follow-up [17].

Lind et al. [18] used healthcare databases in Canada and the United Kingdom (UK) to calculate annual MRs for adults aged ≥ 20 years with and without T2D from 1996–2009. HRs for mortality were higher for those with T2D: 2.68 (95% CI 1.51–4.74) in Canada and 2.41 (95%

Table 3. Hazard ratios for all-cause, cardiovascular, and cancer mortality based on dysglycemia categories.

Dysglycemia Categories	All-cause mortality			CV mortality			Cancer mortality		
	HR	95% CI	P	HR	95% CI	P	HR	95% CI	P
Euglycemia	1			1			1		
Prediabetes	0.99	0.71–1.39	0.95	1.07	0.59–1.94	0.83	0.78	0.43–1.40	0.40
Men	0.89	0.55–1.41	0.61	1.35	0.58–3.15	0.49	0.85	0.41–1.75	0.66
Women	0.96	0.56–1.62	0.87	1.04	0.44–2.50	0.92	0.64	0.23–1.81	0.40
Known T2D	2.02	1.29–3.16	0.002	2.79	1.35–5.75	0.006	1.77	0.78–4.03	0.17
Men	1.76	0.95–3.26	0.130	1.66	0.46–5.95	0.44	2.30	0.85–6.22	0.10
Women	2.56	1.30–5.06	0.007	6.72	2.50–18.07	0.001	1.70	0.36–8	0.50
Unknown T2D	1.51	1.00–2.28	0.050	1.44	0.67–3.08	0.35	1.33	0.65–2.74	0.43
Men	1.59	0.87–2.89	0.130	2.06	0.60–7.04	0.25	1.68	0.69–4.08	0.25
Women	1.15	0.60–2.28	0.580	1.93	0.66–5.63	0.23	0.68	0.17–1.81	0.58
Total T2D	1.71	1.25–2.34	0.001	1.82	1.09–3.03	0.027	1.67	0.96–2.90	0.07
Men	1.76	1.15–2.71	0.010	1.57	0.68–3.65	0.29	2.04	1.03–4.04	0.04
Women	1.62	0.99–2.65	0.055	3.31	1.59–6.89	0.001	1.09	0.38–3.12	0.87

Abbreviations: CV, cardiovascular; HR, hazard ratio; CI, confidence interval; T2D, type 2 diabetes. The statistically significant results are marked in bold.

<https://doi.org/10.1371/journal.pone.0211070.t003>

Table 4. Differences in metabolic and biochemical data according to causes of mortality.

	CV mortality (74)	Cancer mortality (72)	Others (58)	P-value
Age at death, years	77.64±9.78	73.75±10.95	77.91±11.65	0.041
eGFR (ml/min)	68.40±18.13	69.01±16.28	69.32±16.49	0.453
LDL cholesterol (mg/mL)	160.58±45.75	149.15±42.86	156.47±42.13	0.291
BMI (kg/m ²)	28.87±5.33	28.11±4.14	28.65±4.41	0.602
HbA1c (%)	6.03±1.56	5.43±0.83	5.53±1.14	0.007
Previous CVD (%)	18 (24.3)	8 (11.1)	4 (6.9)	0.011
Men (%)	35 (47.3)	47 (65.3)	29 (50)	0.07
Smokers (%)	11 (14.9)	19 (26.4)	8 (13.8)	0.08
Previous HBP (%)	39 (52.7)	24 (33.3)	17 (29.3)	0.01
No sport (%)	70 (94.6)	64 (88.9)	52 (89.6)	0.43
SBP (mmHg)	151.35±20.65	148.74±22.16	144.36±25.24	0.21
DBP (mmHg)	88.62±13.27	89.64±14.87	86.60±13.86	0.46
Total cholesterol (mg/dL)	240.59±50.04	227.42±47.03	241.31±45.85	0.16
HDL cholesterol (mg/dL)	53.02±13.20	53.87±14.23	58.30±14.40	0.08
Triglycerides (mg/dL)	141.04±77.22	123.39±56.70	132.69±70.25	0.31
Estimated fat index (%)	37.40±8.73	34.21±8.50	36.80±8.55	0.06

CV, cardiovascular; eGFR, estimated glomerular filtration rate; LDL, low-density lipoprotein; BMI, body mass index; HbA1c, glycohemoglobin; CVD, cardiovascular disease; HBP, high blood pressure; SBP, systolic blood pressure; DBP, diastolic blood pressure; HDL, high-density lipoprotein. The statistically significant results are marked in bold.

<https://doi.org/10.1371/journal.pone.0211070.t004>

Cardiovascular mortality

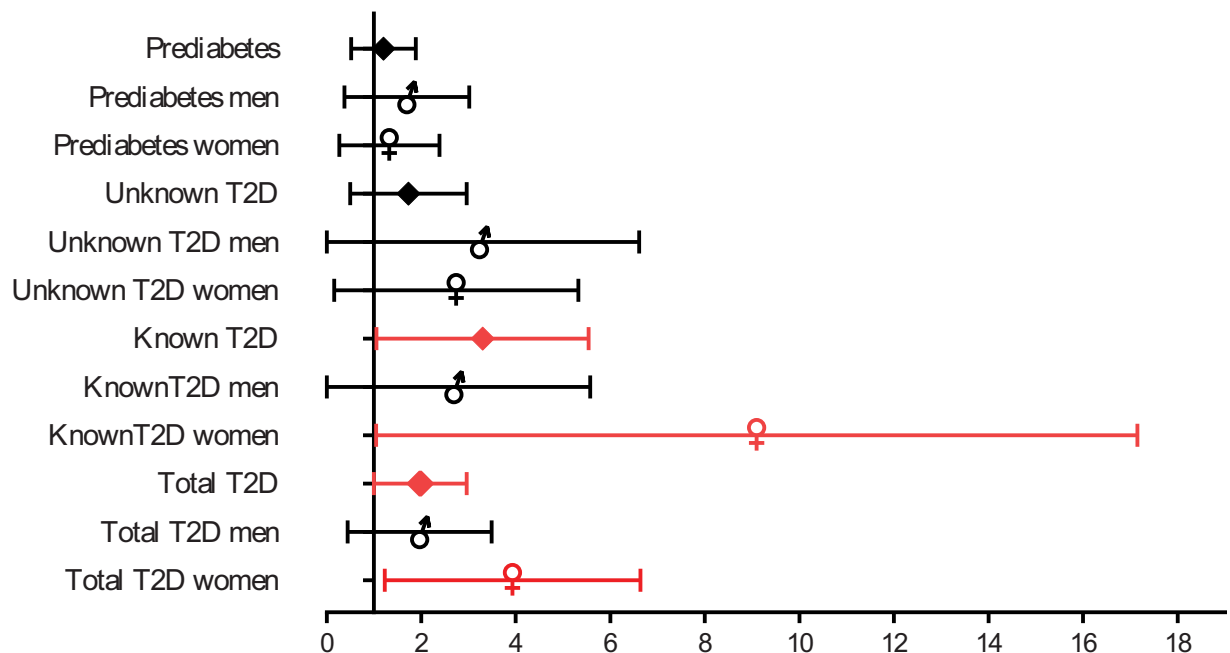


Fig 3. HR (95% CI) for cardiovascular mortality depending on gender and presence of known or undiagnosed T2D.

<https://doi.org/10.1371/journal.pone.0211070.g003>

Cancer mortality

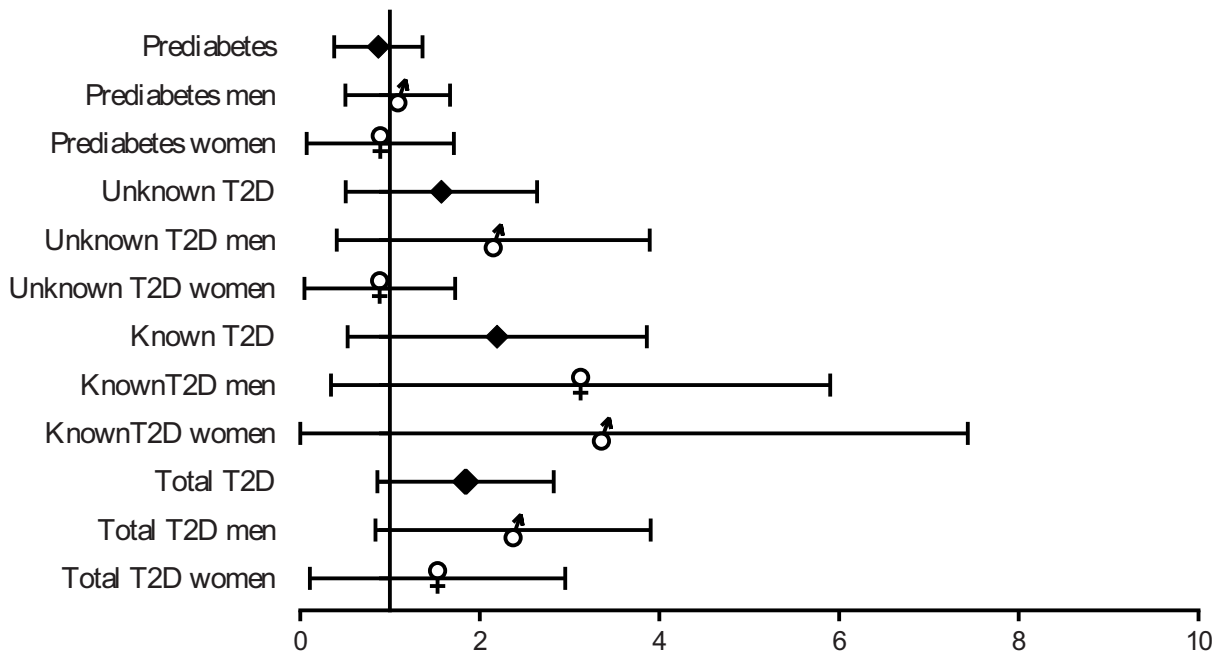


Fig 4. HR (95% CI) for Cancer mortality depending on gender and presence of known or undiagnosed T2D.

<https://doi.org/10.1371/journal.pone.0211070.g004>

CI 1.28–4.53) in the UK. As reported previously in the National Health and Nutrition Examination Survey (NHANES) II study [19,20], the HR for cardiovascular mortality was smaller in undiagnosed diabetes than in diagnosed diabetes (1.54 [95% CI 0.85–2.79] and 2.62 [95% CI 1.81–3.78], respectively). The results of our analysis of cardiovascular death risk showed a significant association with known T2D but not with newly diagnosed T2D. This finding could be due to the small sample size and the limited duration of diabetes mellitus.

As stated earlier, comparability with other studies is problematic because our sample size was smaller; however, HRs for mortality in T2D groups were similar to those obtained in the UK. Our analyses showed higher HRs for mortality in women with T2D than in men, specifically due to cardiovascular disease as reported previously [21–24].

Table 5. Hazard ratios (95% confidence interval) for all-cause mortality in persons with type 2 diabetes depending on age group.

	T2D			Known T2D			Unknown T2D			N
	Adjusted HR for all-cause mortality (CI 95%)	N [†]	n	Adjusted HR for all-cause mortality (CI 95%)	N [†]	n	Adjusted HR for all-cause mortality (CI 95%)	N [†]	n	
30–45 years	15.91 (2.4–105.58)	2	10	38.02 (2.79–518.33)	1	1	8.19 (0.6–111.85)	1	9	338
45–60 years	1.48 (0.5–4.36)	7	30	3.67 (0.76–17.68)	3	8	0.81 (0.22–2.97)	4	22	323
≥60 years	1.64 (1.16–2.31)	53	91	1.94 (1.19–3.18)	26	39	1.4 (0.86–2.29)	27	52	373

N[†]: Number of dead participants in each age group.

Abbreviations: T2D, type 2 diabetes; HR, hazard ratio; CI, confidence interval.

<https://doi.org/10.1371/journal.pone.0211070.t005>

Furthermore, our study showed a similar increase in cancer mortality in both the previously known and unknown T2D groups, and this finding was not significantly different from that of the NHANES II study. FRESCO [25], a Spanish study of 55,292 individuals, showed that diabetes was associated with premature death from cardiovascular disease and cancer, in keeping with our results.

According to our data, subjects with newly diagnosed T2D have a lower mortality risk than those with known T2D. This may be due in part to the shorter time of evolution and the improved profile of metabolic and lifestyle risk factors at baseline. Subjects with undiagnosed T2D had lower systolic and diastolic blood pressure and better eGFR than those with previously known T2D, but higher LDL-cholesterol. A possible explanation for the last finding is the greater use of lipid-lowering drugs in persons with diagnosed T2D.

Mortality risk in this cohort was studied in 2005 by Valdés et al. [9] after 6 years of follow-up. According to their results at that time, both individuals with diagnosed diabetes and those with undiagnosed diabetes had a risk of mortality around 2.5-3-times greater than individuals with normoglycemia. Compared with our results, the increase in mortality in persons with T2D was maintained. The importance of the time of evolution of diabetes became even more evident in our study, as people who were diagnosed in 1998 had lower MRs than those diagnosed before 1998.

In addition, according to a previous study [26], prediabetes (IGT or IFG according to IFG-ADA or IFG-WHO criteria) is associated with an increased risk of composite cardiovascular disease (relative risk 1.13, 1.26, and 1.30 for IFG-ADA, IFG-WHO, and IGT, respectively) and all-cause mortality (1.13, 1.13, and 1.32, respectively). However, another previous study [27] found that prediabetes (those who did not indicate diagnosed diabetes and had HbA1c 5.7%–<6.5% [39–<48 mmol/mol]) was not associated with increased mortality, and raised HbA1c did not appear to have a statistically significant impact upon cancer mortality. Our data showed similar results; the prediabetes group did not have an increased MR compared to the NGT group using ADA 2018 criteria. This absence of association may be because we sent letters to all individuals with their results, encouraging them to incorporate lifestyle changes if they had any alterations in glucose metabolism.

Several limitations apply to this study. The main limitation is the small sample size, with a limited number of events available for analysis. Thus, it was difficult to demonstrate statistical differences. Nevertheless, for cases in which we were able to show statistical significance, the effect can be considered large. However, this study has several strengths, including that it was population-based, and the mortality follow-up was relatively long. Moreover, cardiovascular and lifestyle risk factors were included to calculate the multivariate adjustment of the regression models.

Conclusion

Individuals with diabetes (especially those with diagnosed diabetes) had a significantly higher mortality risk than those with NGT after 18 years of follow-up even after adjusting for multiple confounders. Excess mortality was especially noticeable in younger women, predominantly due to cardiovascular disease.

Our results highlight the need for an early diagnosis and intensive multifactorial treatment considering the present diabetes pandemic.

Acknowledgments

We thank all the volunteers who participated in the study, without whose help they would have been impossible to perform.

We also thank the primary care teams of the selected areas, Ismael Huerta, Shura Rozada, Mortality Register of the Principality of Asturias (especially Dr. José Ramón Quirós) and the Endocrinology Group of Asturias.

Special thanks to Christopher Parkin, who kindly contributed in the edition of the manuscript.

Author Contributions

Conceptualization: Jessica Ares, Edelmiro Menéndez-Torre.

Data curation: Jessica Ares, Sandra Rodríguez-Rodero.

Formal analysis: Jessica Ares.

Investigation: Sergio Valdés, Patricia Botas, Cecilia Sánchez-Ragnarsson, Edelmiro Menéndez-Torre, Elías Delgado.

Methodology: Sergio Valdés, Patricia Botas, Cecilia Sánchez-Ragnarsson, Sandra Rodríguez-Rodero, Edelmiro Menéndez-Torre, Elías Delgado.

Project administration: Edelmiro Menéndez-Torre.

Resources: Elías Delgado.

Supervision: Sergio Valdés, Edelmiro Menéndez-Torre, Elías Delgado.

Visualization: Jessica Ares, Edelmiro Menéndez-Torre, Elías Delgado.

Writing – original draft: Jessica Ares.

Writing – review & editing: Paula Morales-Sánchez, Edelmiro Menéndez-Torre, Elías Delgado.

References

1. Comité de la 8va edición de Diabetes Atlas. Diabetes Atlas. Vol. 8, Federación Internacional de Diabetes. 2017. 0–148 p.
2. Tamayo T, Rosenbauer J, Wild SH, Spijkerman AMW, Baan C, Forouhi NG, et al. Diabetes in Europe: An update. *Diabetes Res Clin Pract* [Internet]. 2014 Feb [cited 2017 Apr 1]; 103(2):206–17. Available from: <http://www.ncbi.nlm.nih.gov/pubmed/24300019> PMID: 24300019
3. Rao Kondapally Seshasai S, Kaptoge S, Thompson A, Di Angelantonio E, Gao P, Sarwar N, et al. Diabetes Mellitus, Fasting Glucose, and Risk of Cause-Specific Death Centers for Disease Control and Prevention, Atlanta. *N Engl J Med March* [Internet]. 2011 [cited 2018 Jan 21]; 3(3649):829–41. Available from: <https://www.ncbi.nlm.nih.gov/pmc/articles/PMC4109980/pdf/nihms-606545.pdf>
4. DECODE Study Group. Age- and sex-specific prevalences of diabetes and impaired glucose regulation in 13 European cohorts. *Diabetes Care* [Internet]. 2003 Jan [cited 2018 Jan 21]; 26(1):61–9. Available from: <http://www.ncbi.nlm.nih.gov/pubmed/12502659> PMID: 12502659
5. The Emerging Risk Factors Collaboration, Sarwar N, Gao P, Seshasai SRK, Gobin R, Kaptoge S, et al. Diabetes mellitus, fasting blood glucose concentration, and risk of vascular disease: a collaborative meta-analysis of 102 prospective studies. *Lancet* [Internet]. 2010 Jun 26 [cited 2018 Jan 21]; 375(9733):2215–22. Available from: <http://www.ncbi.nlm.nih.gov/pubmed/20609967> PMID: 20609967
6. Unwin N, Shaw J, Zimmet P, Alberti KGMM. Impaired glucose tolerance and impaired fasting glycaemia: the current status on definition and intervention. *Diabet Med* [Internet]. 2002 Sep [cited 2018 Jan 21]; 19(9):708–23. Available from: <http://www.ncbi.nlm.nih.gov/pubmed/12207806> PMID: 12207806
7. Botas Cervero P, Delgado Álvarez E, Castaño Fernández G, Díaz de Greñu C, Prieto Santiago J, Díaz Cadórniga FJ. Prevalencia de diabetes Mellitus e intolerancia a la glucosa en población entre 30 y 75 años en Asturias, España. *Rev Clínica Española* [Internet]. Editorial Científico Mídica; 2002 [cited 2017 Apr 14]; 202(8):421–7. Available from: <http://www.revlinesp.es/es/prevalencia-diabetes-mellitus-e-intolerancia/articulo/13035639/>
8. Tunstall-Pedoe H, Kuulasmaa K, Amouyel P, Arveiler D, Rajakangas AM, Pajak A. Myocardial infarction and coronary deaths in the World Health Organization MONICA Project. Registration procedures,

- event rates, and case-fatality rates in 38 populations from 21 countries in four continents. *Circulation* [Internet]. 1994 Jul [cited 2018 Mar 17]; 90(1):583–612. Available from: <http://www.ncbi.nlm.nih.gov/pubmed/8026046> PMID: 8026046
9. Sergio Valdés, Patricia Botas ED y FDC. Riesgo de mortalidad en diabetes diagnosticada, diabetes no diagnosticada y prediabetes en población adulta española. Estudio Asturias 1998–2004. *Rev Española Cardiol*. 2009; 62(5):528–34.
 10. Valdes S, Botas P, Delgado E, Alvarez F, Cadorniga FD. Population-Based Incidence of Type 2 Diabetes in Northern Spain: The Asturias Study. *Diabetes Care* [Internet]. 2007 Sep 1 [cited 2017 Apr 9]; 30(9):2258–63. Available from: <http://www.ncbi.nlm.nih.gov/pubmed/17536076> PMID: 17536076
 11. Gomez-Ambrosi J, Silva C, Catalan V, Rodriguez A, Galofre JC, Escalada J, et al. Clinical Usefulness of a New Equation for Estimating Body Fat. *Diabetes Care* [Internet]. 2012 Feb 1 [cited 2018 Mar 29]; 35(2):383–8. Available from: <http://www.ncbi.nlm.nih.gov/pubmed/22179957> PMID: 22179957
 12. ICD-10 Version:2016 [Internet]. [cited 2018 Mar 27]. Available from: <http://apps.who.int/classifications/icd10/browse/2016/en>
 13. Kannel WB, Plehn JF, Cupples LA. Cardiac failure and sudden death in the Framingham Study. *Am Heart J* [Internet]. 1988 Apr [cited 2017 Apr 22]; 115(4):869–75. Available from: <http://www.ncbi.nlm.nih.gov/pubmed/3354416> PMID: 3354416
 14. Röckl S, Brinks R, Baumert J, Paprott R, Du Y, Heidemann C, et al. All-cause mortality in adults with and without type 2 diabetes: findings from the national health monitoring in Germany. *BMJ open diabetes Res care* [Internet]. BMJ Publishing Group; 2017 [cited 2018 Feb 21]; 5(1):e000451. Available from: <http://www.ncbi.nlm.nih.gov/pubmed/29435349> PMID: 29435349
 15. Tancredi M, Rosengren A, Svensson A-M, Kosiborod M, Pivodic A, Gudbjörnsdóttir S, et al. Excess Mortality among Persons with Type 2 Diabetes. *N Engl J Med* [Internet]. Massachusetts Medical Society; 2015 Oct 29 [cited 2018 Feb 22]; 373(18):1720–32. Available from: <http://www.nejm.org/doi/10.1056/NEJMoa1504347> PMID: 26510021
 16. Kowall B, Rathmann W, Heier M, Giani G, Peters A, Thorand B, et al. Categories of glucose tolerance and continuous glycemic measures and mortality. *Eur J Epidemiol* [Internet]. Springer Netherlands; 2011 Aug 23 [cited 2018 Jan 21]; 26(8):637–45. Available from: <http://www.ncbi.nlm.nih.gov/pubmed/21785986> PMID: 21785986
 17. MEISINGER C, WOLKE G, BRASCHE S, STRUBE G, HEINRICH J. Postload Plasma Glucose and 30-Year Mortality Among Nondiabetic Middle-Aged Men From the General Population: The ERFORT Study. *Ann Epidemiol* [Internet]. 2006 Jul [cited 2018 Mar 29]; 16(7):534–9. Available from: <http://www.ncbi.nlm.nih.gov/pubmed/16406244> PMID: 16406244
 18. Lind M, Garcia-Rodriguez LA, Booth GL, Cea-Soriano L, Shah BR, Ekeröth G, et al. Mortality trends in patients with and without diabetes in Ontario, Canada and the UK from 1996 to 2009: a population-based study. *Diabetologia* [Internet]. 2013 Dec 11 [cited 2018 Feb 26]; 56(12):2601–8. Available from: <http://www.ncbi.nlm.nih.gov/pubmed/24114114> PMID: 24114114
 19. Saydah SH, Loria CM, Eberhardt MS, Brancati FL. Abnormal glucose tolerance and the risk of cancer death in the United States. *Am J Epidemiol* [Internet]. 2003 Jun 15 [cited 2018 Jan 21]; 157(12):1092–100. Available from: <http://www.ncbi.nlm.nih.gov/pubmed/12796045> PMID: 12796045
 20. Saydah SH, Loria CM, Eberhardt MS, Brancati FL. Subclinical states of glucose intolerance and risk of death in the U.S. *Diabetes Care* [Internet]. 2001 Mar [cited 2018 Mar 30]; 24(3):447–53. Available from: <http://www.ncbi.nlm.nih.gov/pubmed/11289466> PMID: 11289466
 21. Regensteiner JG, Golden S, Huebschmann AG, Barrett-Connor E, Chang AY, Chyun D, et al. Sex Differences in the Cardiovascular Consequences of Diabetes Mellitus: A Scientific Statement From the American Heart Association. *Circulation* [Internet]. American Heart Association, Inc.; 2015 Dec 22 [cited 2018 Mar 29]; 132(25):2424–47. Available from: <http://www.ncbi.nlm.nih.gov/pubmed/26644329> PMID: 26644329
 22. Peters SAE, Huxley RR, Sattar N, Woodward M. Sex Differences in the Excess Risk of Cardiovascular Diseases Associated with Type 2 Diabetes: Potential Explanations and Clinical Implications. *Curr Cardiovasc Risk Rep* [Internet]. Springer US; 2015 Jul 26 [cited 2018 Mar 29]; 9(7):36. Available from: <http://link.springer.com/10.1007/s12170-015-0462-5> PMID: 26029318
 23. Gregg EW, Gu Q, Cheng YJ, Narayan KMV, Cowie CC. Mortality trends in men and women with diabetes, 1971 to 2000. *Ann Intern Med* [Internet]. 2007 Aug 7 [cited 2018 Mar 29]; 147(3):149–55. Available from: <http://www.ncbi.nlm.nih.gov/pubmed/17576993> PMID: 17576993
 24. Harding JL, Shaw JE, Peeters A, Guiver T, Davidson S, Magliano DJ. Mortality Trends Among People With Type 1 and Type 2 Diabetes in Australia: 1997–2010. *Diabetes Care* [Internet]. 2014 Sep [cited 2018 Mar 29]; 37(9):2579–86. Available from: <http://www.ncbi.nlm.nih.gov/pubmed/24947787> PMID: 24947787

25. Baena-Díez JM, Peñafiel J, Subirana I, Ramos R, Elosua R, Marín-Ibañez A, et al. Risk of Cause-Specific Death in Individuals With Diabetes: A Competing Risks Analysis. *Diabetes Care* [Internet]. 2016 Nov [cited 2018 Mar 30]; 39(11):1987–95. Available from: <http://www.ncbi.nlm.nih.gov/pubmed/27493134> PMID: 27493134
26. Huang Y, Cai X, Mai W, Li M, Hu Y. Association between prediabetes and risk of cardiovascular disease and all cause mortality: systematic review and meta-analysis. *BMJ* [Internet]. BMJ Publishing Group; 2016 Nov 23 [cited 2018 May 3]; 355:i5953. Available from: <http://www.ncbi.nlm.nih.gov/pubmed/27881363> PMID: 27881363
27. Gordon-Dseagu VLZ, Mindell JS, Steptoe A, Moody A, Wardle J, Demakakos P, et al. Impaired Glucose Metabolism among Those with and without Diagnosed Diabetes and Mortality: A Cohort Study Using Health Survey for England Data. Obukhov AG, editor. *PLoS One* [Internet]. 2015 Mar 18 [cited 2018 Feb 18]; 10(3):e0119882. Available from: <http://www.ncbi.nlm.nih.gov/pubmed/25785731> PMID: 25785731