

Matrix metalloproteinase Mmp-1a is dispensable for normal growth and fertility in mice and promotes lung cancer progression by modulating inflammatory responses.

Miriam Fanjul-Fernández, Alicia R. Folgueras, Antonio Fueyo, Milagros Balbín, María F. Suárez, M. Soledad Fernández-García, Steven D. Shapiro, José M. P. Freije, and Carlos López-Otín

Fig. 2A did not indicate the borders between different sections of the same gel. Additionally, an unused lane was mistakenly included in the original assembly of the actin panel causing a shift in lanes 12–14. Fig. 4B did not indicate the borders between different sections of the same immunoblot. Also, the incorrect β -actin immunoblots were used for the left CHI3L3 panel and the RAGE panel. The RAGE immunoblot was performed with the same samples run in parallel for the detection of CHI3L3 and β -actin shown in the left-most panel. These errors have now been corrected and do not affect the results or conclusions of this work.

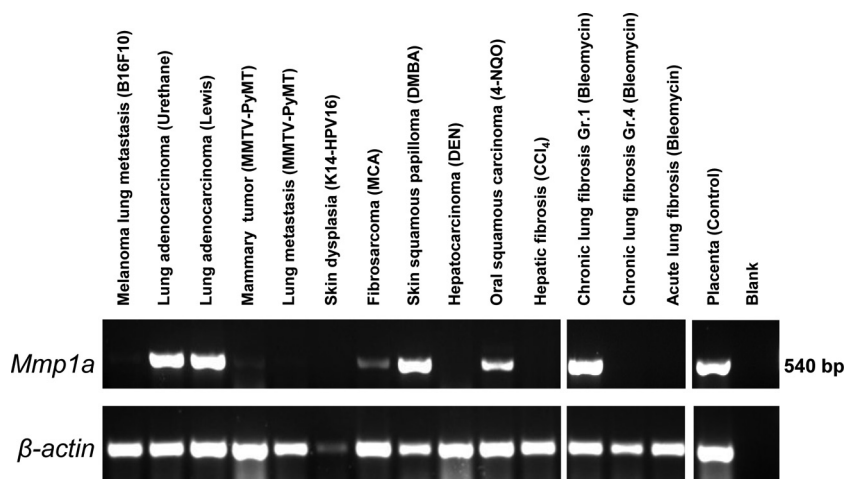


Fig. 2A

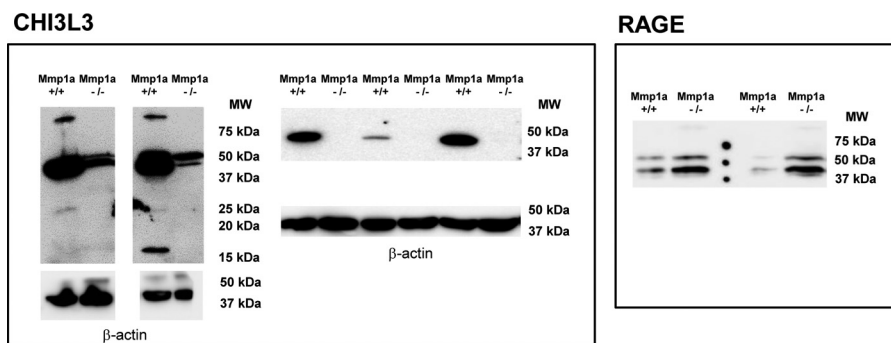


Fig. 4B

Matrix metalloproteinase Mmp-1a is dispensable for normal growth and fertility in mice and promotes lung cancer progression by modulating inflammatory responses.

Miriam Fanjul-Fernández, Alicia R. Folgueras, Antonio Fueyo, Milagros Balbín, María F. Suárez, M. Soledad Fernández-García, Steven D. Shapiro, José M. P. Freije and Carlos López-Otín

J. Biol. Chem. 2018, 293:11970.
doi: 10.1074/jbc.AAC118.004704

Access the most updated version of this article at <http://www.jbc.org/content/293/30/11970>

Alerts:

- [When this article is cited](#)
- [When a correction for this article is posted](#)

[Click here](#) to choose from all of JBC's e-mail alerts

This article cites 0 references, 0 of which can be accessed free at <http://www.jbc.org/content/293/30/11970.full.html#ref-list-1>